



Colorado TB Elimination Plan

- Colorado began discussing development of a TB elimination plan in 2014
- Recruitment for TB elimination advisory council members began in late-2014 and we had a great response.
- We hired an external facilitator (Apex Consulting) to lead monthly meetings and take/distribute minutes freeing up TB Program staff to collaborate in the process rather than oversee it.




Colorado TB Elimination Plan

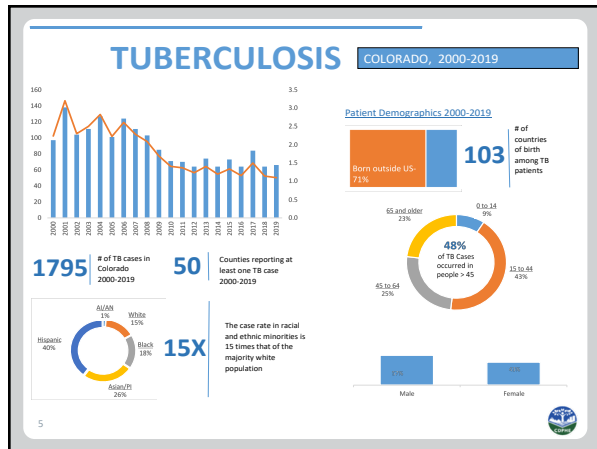
- All of 2015 & most of 2016 was spent drafting elements of the plan through monthly in-person/remote mtgs and smaller workgroups.
 - We reviewed several other TBE plans including WHO's low-incidence country TBE plan, North Dakota's, and California's.
 - We received permission from CA to borrow core components of its plan which we filtered through the Colorado lens.

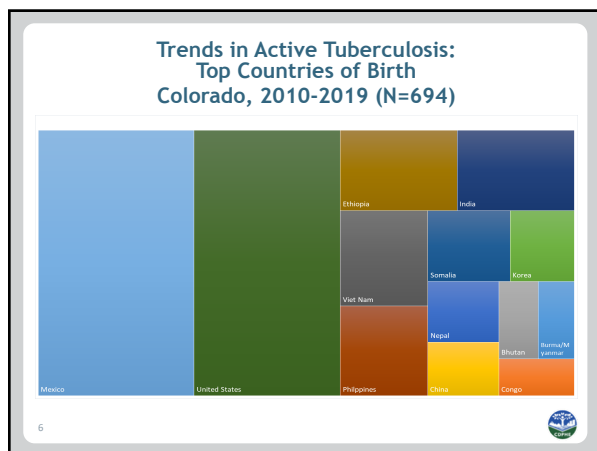


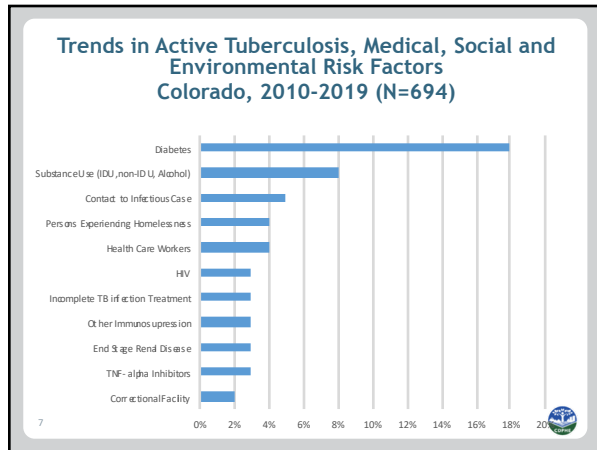
Colorado TB Elimination Plan

- The key “take-aways” from California’s plan which mirrored the epidemiology we were seeing in Colorado:
 - Incidences of TB disease were stemming largely from untreated/undiagnosed TB infection or from incomplete TB infection treatment that progressed to TB disease.
 - Given this epi data we chose to focus our efforts on screening/testing/treating TB infection as the catalyst for the TBE plan.

4 

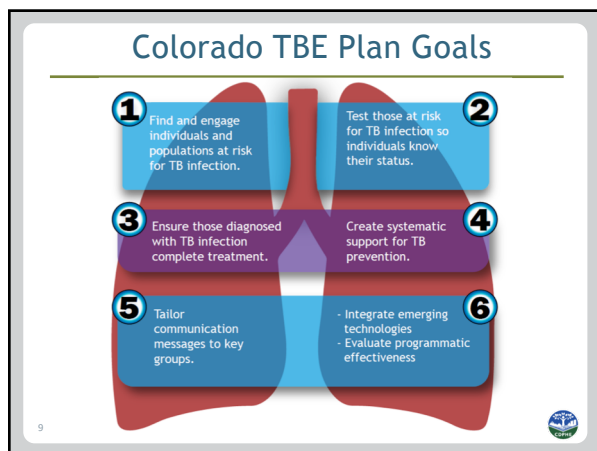






Colorado TB Elimination Plan

- The Advisory Committee strived to avoid creating a “pie in the sky”, unattainable plan that would simply sit on a shelf.
- Instead we assessed CO’s resources and built a practical, attainable plan that could act as a road map for the next decade’s TBE work in the state.



Colorado TB Elimination Plan

- Six workgroups were created to build out the strategies, objectives and activities of each of the six core goals of the TBE plan.
 - These workgroups would report back to the larger Advisory Committee periodically with updates or to brainstorm solutions to barriers they experienced.

10

Colorado's TBE Advisory Committee

<ul style="list-style-type: none"> • Theo Abbey, MPH—STI/HIV Disease Intervention Specialist/ family member of TB patient • Kaylynn Alona, MPH—Senior Data Applications Analyst, Denver Public Health • Juli Bettridge—TB Program Data Coordinator, CDPHE • Robert Belknap, MD—Director, Denver Metro TB Clinic • Ellen Brilliant—TB Elimination Task Force facilitator, Apex Strategies • Melissa Broudy, RN—TB Program Training and Education Coordinator, CDPHE • Kerri Brown, MSPH—former TB Training and Education Coordinator, CDPHE • Christopher A Czaia, MD, MPH—Preventive Medicine Resident, University of Colorado, Denver • Becky DiDio, MPH—Chronic Disease Coordinator, Diabetes & Cardiovascular Disease Unit, CDPHE • Sarah Drobek, RN, MPH—Public Health Nurse Larimer County Public Health • Pete Dupree, MPH—TB Program Manager/Public Health Epidemiologist, State TB Controller CDPHE • Carrie Fritschy—TB patient advocate and mother of TB survivor • James Gaensbauer, MD, MScPH—Assistant Professor of Pediatrics, University of Colorado, School of Medicine, Pediatric Infectious Diseases, Department of Pediatrics, DIRHA, Denver Metro Tuberculosis Clinic, Children's Hospital Colorado 	<ul style="list-style-type: none"> • Michelle Haas, MD—Infectious Disease Physician, Denver Metro TB Clinic • Linda Latelle, RN, BSN—Public Health Nurse, Larimer County Public Health • Hugh Maguire, PhD—Public Health Microbiology Program Manager, CDPHE • Natalie Marzari, MD—Preventive Medicine Resident, University of Colorado/CCED-CDPHE • Talla Pridyck, MD—Preventive Medicine Resident, University of Colorado/CCED-CDPHE • Randall Reeves, MD, MSc—President of the North American Region of the Union, Surinam, Director and current volunteer at DMFBC • Shannon Rowe, MPH—TB Program Manager, El Paso County Public Health • Monica Sadowsky, RN—TB Nurse Epidemiologist, El Paso County Public Health • Max Sallinger, MD, FIDSA, FAAM—Laboratory Director, Mycobacteriology & Pharmacokinetics, National Jewish Health • Ann Scarpitta, BSN, MPH—State TB Nurse Consultant, CDPHE • Daniel Shodell, MD, MPH—Deputy Division Director, Disease Control and Environmental Epidemiology, CDPHE • Emily Trappetti, PhD—Supervisor, Public Health Microbiology and Infection Control • Mary Utaler, MSN, RN—TB Nurse Epidemiologist, El Paso County Public Health
--------------------------------------------------------------------------------------------------------------------------------------------------------------------------------------------------------------------------------------------------------------------------------------------------------------------------------------------------------------------------------------------------------------------------------------------------------------------------------------------------------------------------------------------------------------------------------------------------------------------------------------------------------------------------------------------------------------------------------------------------------------------------------------------------------------------------------------------------------------------------------------------------------------------------------------------------------------------------------------------------------------------------------------------------------------------------------------------------------------------------------------------------------------------------------------------------------------------------------------------------------------------------------------------------------------------------------------------------------	----------------------------------------------------------------------------------------------------------------------------------------------------------------------------------------------------------------------------------------------------------------------------------------------------------------------------------------------------------------------------------------------------------------------------------------------------------------------------------------------------------------------------------------------------------------------------------------------------------------------------------------------------------------------------------------------------------------------------------------------------------------------------------------------------------------------------------------------------------------------------------------------------------------------------------------------------------------------------------------------------------------------------------------------------------------------------------------------------------------------------------------------------------------------------------------------------------------------------------------------------------------------------------------------------------------

11

Questions/Comments?

Pete Dupree, MPH
 TB Program Manager & Public Health Epi
peter.dupree@state.co.us
 (303) 692-2677

Colorado's TB website
<https://www.colorado.gov/pacific/cdphe/tb>

12
